

Exempt vs Non-Exempt

Examples of Exempt and Non-Exempt equipment

Not all every piece of equipment described in this document, only examples

Reference material:

Cal fire section 2 and 3

<http://cdfdata.fire.ca.gov/pub/fireplan/fpupload/fppguidepdf126.pdf>

TIL Doc#

TD-01522B-006

TD-9001B-007

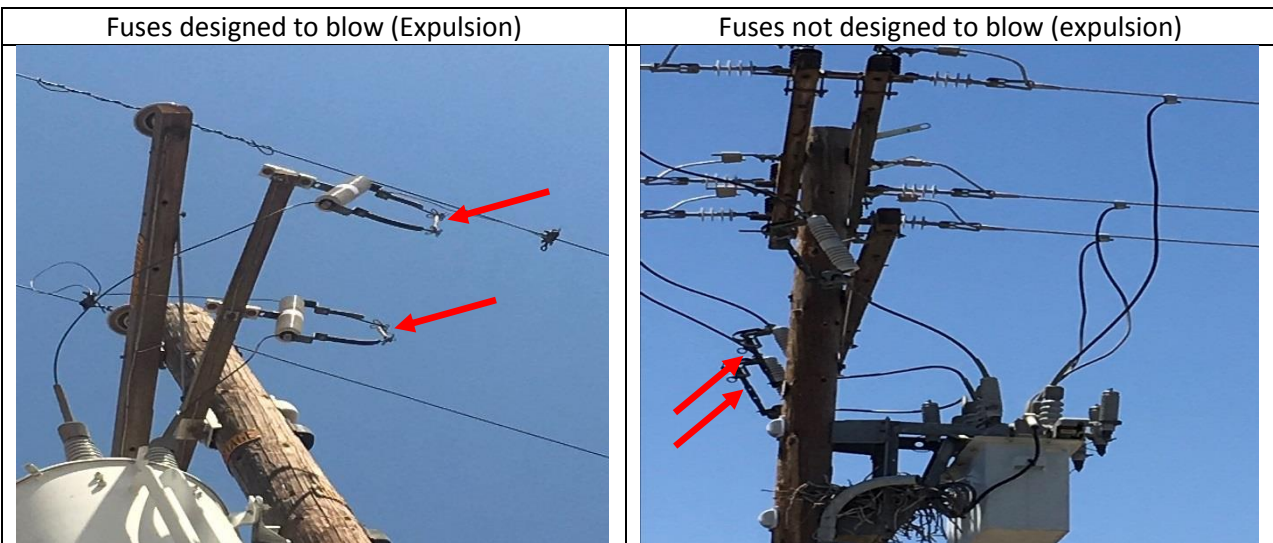
TD9001B-008

Examples of Non-Exempt Equipment

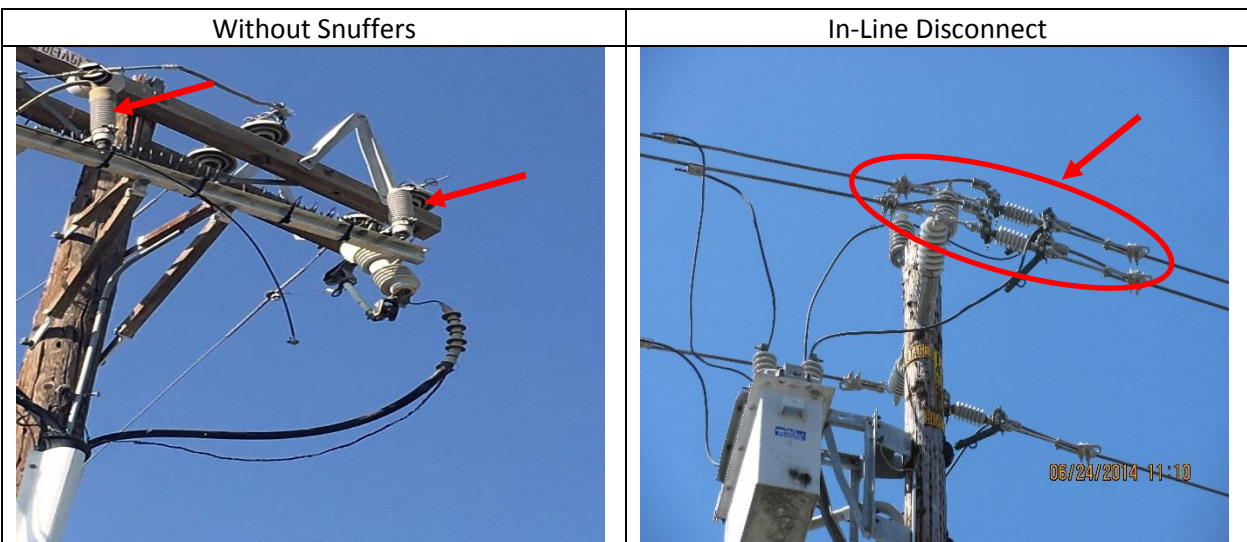
Expulsion or no arc snuffing abilities

Open Link Fuses

Pt. 44 Solid Blade

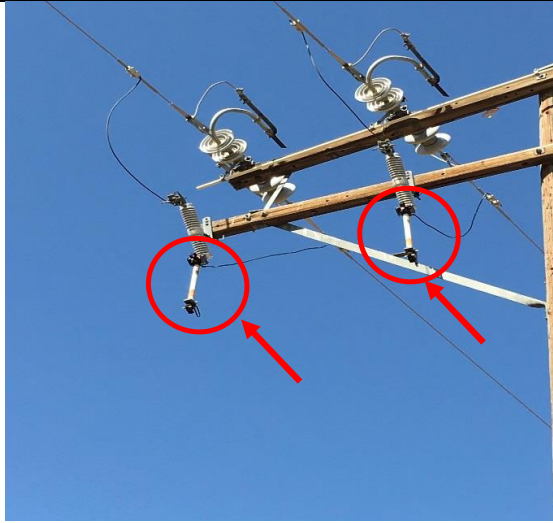

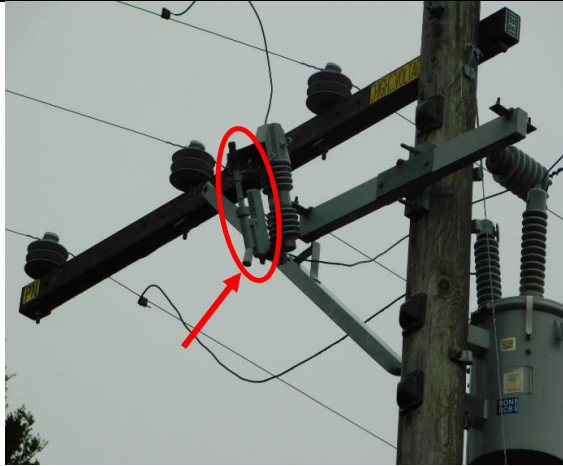




Lightning Arrestors



Examples of Exempt Equipment

NON-Expulsion or arc snuffing abilities

<p>PT. 63 "E" fuses</p> 	<p>KPF switch w/arcing horns and clappers</p> 
<p>Fault-Tamer Fuses</p> 	<p>Oil-filled Fuses</p> 
<p>USA 900 Amp switch</p> 	<p>Lightning Arresters with Snuffer</p> 